

Old World Elegance

A design team's vision
becomes a family-friendly dream home

TEXT BY ROBERTA LANDMAN ■ PHOTOGRAPHY BY LUCA TROVATO

This page: Interior designer Wendy Black Rodgers established a mood of centuries-past Italy in the home's foyer, where an antique tapestry hangs above a custom settee covered in re-embroidered velvet. **Opposite:** Richly upholstered furnishings and a grand piano add to the living room's salonlike appeal. The tall cabinet, home to violins, and a quartet of framed antique sheet music speak to the room's musical theme. The outsize ottoman can be pulled apart for extra seating.



I

f you build it, they will come." This line from a movie could have been written about one thoroughly charming Tuscan-style home.

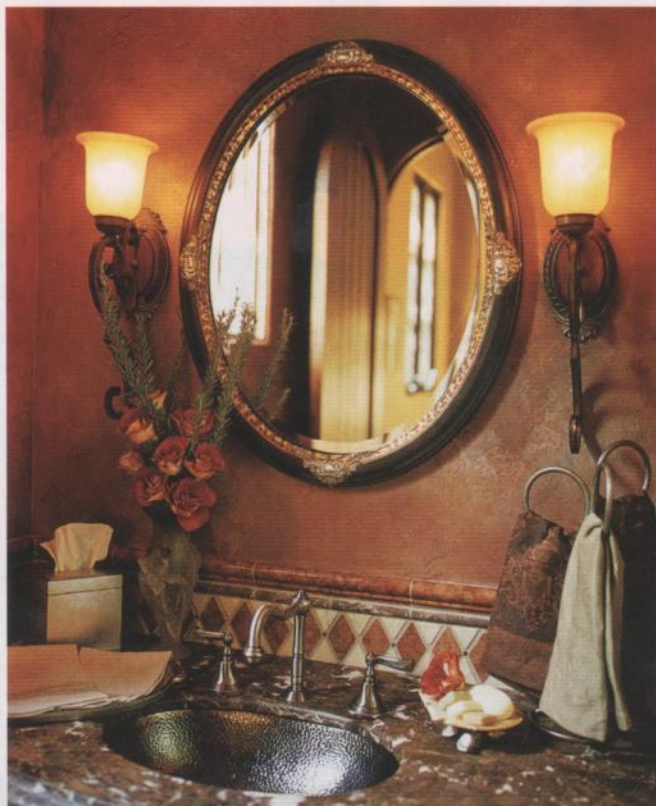
The residence began life in the minds of architect Mark Fredstrom and builder Greg Stanford as a spec house. Now a 10,000-square-foot showplace with resortlike grounds, the Paradise Valley, Ariz., property is featured this month on the *Phoenix Home & Garden* Palette of Homes Extreme Dream Tour.

"It's a unique plan," Stanford says of spaces that appear cozy rather than cavernous. "You could have had empty-nesters living here, and they'd feel comfortable. But we certainly had a family in mind—that was our target audience."

The home was built. And, like that line from the movie, a family did come. A couple and their two young sons moved into a setting at once luxurious and homey. Adding warmth are such Old World features as trestle-beam and brick bóveda ceilings, and the earthiness of stone.

Using these elements as her backdrop, interior designer Wendy Black Rodgers fashioned rooms based on the homeowners' desire for comfort. Among considerations were attention to scale and incorporating fine fabrics into the design scheme, the latter a request of the woman of the house. In addition, Rodgers would ensure that even the living room—often an ignored spot in a home—would invite plentiful use.

Rodgers smiles as she recalls a comment from the man who crafted her design for a family room sofa. "He said, 'I hope you're not making a mistake—this is enormous!'" The sofa is quite large, the designer confirms, as are other pieces in the ultra-high-ceilinged room. And that is by design: "So many of the newer homes are very large-scaled and contain more volume than in the past," Rodgers explains. "Better to choose fewer good-scaled pieces. This helps to bring the rooms down to human size and makes people feel comfortable in them."



With its stone fireplace wall and elegantly framed flat-screen TV, the family room is the center of everyday life. Here, "Fabrics were chosen to be lived on," according to Rodgers. The upholstery on that extra-large sofa, for example, is washed chenille. "It's soft like regular chenille, yet there's a bit of a worn look," she says. "It makes people feel comfortable, like they're not going to hurt it."

The living room, by contrast, is a dressier area. Furnishings include a silk velvet sofa and other plush trappings; yet the area often is a hub of family activity. "I was afraid they wouldn't use this room if it were a formal living room," Rodgers remarks. Her solution: She themed the space around the family's interest in music. A tall cabinet of her design is a repository for violins and sheet music. Lamps made from antique church candlesticks wear leather shades inscribed with musical notation copied from vintage sheet music. Rodgers says she got the idea from shades on lamps she saw at Hearst Castle in San Simeon, Calif.

Also a reminder of William Randolph Hearst's legendary domicile, fabrics from Pindler & Pindler's Hearst Castle® Collection are used in many parts of the home, and include a coverlet fit for a queen (and king) in the master bedroom.

But the bed's canopy is pure Rodgers and absolute femininity. A froufrou confection made from 90 yards of silk, it is as delicious as this dream of a house. □

This page: Light from sconces sheds a soft gleam upon faux-finished walls of the jewel-box powder room. A marble-topped furniture-style vanity with hammered-metal sink has a tile backsplash in a diamond pattern. **Opposite:** Resplendent in Pierre Frey Bolchoi fabric bedding, an antique Portuguese bed is the centerpiece of this guest bedroom. Adding to the room's Old World ambience are an ornate candlestick-style lamp, and angel-themed religious art.



This page: Seating covered in elegant yet durable outdoor fabric gives a covered patio dining spot the allure of its indoor cousin.

Opposite: Under a brick bóveda ceiling, the interior dining room table is set for a feast. Rodgers designed the table, leather and hand-painted velvet side chairs, and the electrified candle-style chandelier, which is decorated during this season of entertaining with fresh flowers and greenery.







This page: Brushed-travertine flooring, a high trestle-beam ceiling, honed granite counters, and a brick stove niche lend this large country kitchen an earthy warmth. **Opposite:** A wall-hung crown emblem and the drapery-adorned four-poster's custom bedding give visitors who stay in the guest house a royal welcome.

DESIGNER FABRIC TIPS

■ If you have a pattern or texture in a fabric, be sure to look at it from a distance as well as up close. Some fabrics "read" as a solid from a distance when they have a lot of pattern.

■ Consider who will be using the furnishings—children and pets are tough on fabrics. Darker colors or tapestries work well for both, and natural fibers are generally easier to clean.

■ Be careful when using certain fabrics on or near a window. The Arizona sun can disintegrate silk, for example, and also fade colors. Generally, solution-dyed acrylics (indoor/outdoor fabrics) are best in direct natural light. Lining window treatments can protect the fabric.



This page: The family room's lofty stone-faced fireplace wall provided a fitting backdrop for the cozy setting Rodgers had in mind for the space. A pair of library chairs in soft leather, a deep-seated sofa, an upholstered ottoman/bench for two little boys' TV-watching, and other seating make this a well-used gathering place. **Opposite:** Ninety yards of silk were used in the creation of the master bedroom four-poster's surrounding draperies and canopy, whose underside comes together in a charming rosette.

See Sources, Page 326.



